



# FIG TREE

Lifestyle Estate



EXCLUSIVE ESTATE BROCHURE

---

# Secure Coastal Living

A Luxury Lifestyle Estate in the Heart of Jeffreys Bay



ALMOST HOME  
CONSTRUCTION

# ABOUT THE ESTATE

---

FIG TREE Lifestyle Estate is situated in Jeffreys Bay in the Eastern Cape of South Africa. It is only a one-hour drive (89.5km) from the closest international airport in Gqeberha (Port Elizabeth).

It is known by the locals as J-Bay and is renowned for being part of the Sunshine Coast of South Africa with its unique climate, beaches and surf waves. The summers are warm and the winters are mild, making water sports, hiking and fishing a popular choice for leisure, and counting it as one of South Africa's top destinations for coastal living.

---

Prices from **R2 550 000** up to **R3 455 000**

This unique upmarket estate offers a selection of **44 full title Homes** and a **sectional title apartment block** all with quality finishes.

The estate is located in the heart of town and is only a 5-minute walk from Jeffreys Bay's main Blue Flag beach. It boasts with a perfect location right next door to Jeffreys Bay Primary School and the Equinox Mall. It is close to all amenities with various shops, schools, restaurants, medical clinics, bowling club and golf range, and a brand new multi theatre hospital that is under construction.

This luxurious lifestyle estate is designed to suit a family or retirement lifestyle and provides a spacious and secure environment, with consideration to each home's privacy within the estate. The onsite facilities include recreational areas to be enjoyed by the estate residents.

Fig Tree Lifestyle Estate offers 24/7 access-controlled secure coastal living.

## WHAT THE LOCALS SAY

" I love living here and waking up to the most stunning sunrises. The views are spectacular, and the local hub of trendy hot spots are fantastic! "

Retired Couple

" We moved here from the city. Our quality of life and time spent together as a family has improved so much. We're excited to be here! "

New Residents

" J-Bay is such a laid back but active community. There's so much to do around the area no matter the weather or season."

Local Surfer

# HOUSES

---

**44 Full Title Houses Available**

**Prices from R2 550 000**

Includes Transfer Cost

- **Prime Location**
- **Walking Distance from Beach**
- **Close to All Amenities**
- **Quality Finishes**
- **Secure Coastal Living**

FIG TREE Lifestyle Estate offers 44 full title stands and turn-key houses.

The estate was designed to create a secure community environment where young and retired families can co-live and still maintain the luxury of privacy.

The architects have well-considered making most of the ocean views, natural storm waterways and indigenous plants to promote private community living.



**ALMOST HOME  
CONSTRUCTION**

# SALES MAP



ESTATE ENTRANCE GATE



INDIGENOUS PLANTS AND NATURAL STORM WATERWAYS

ARTIST IMPRESSIONS - FOR MARKETING PURPOSES ONLY



# TYPE A

TOTAL FLOOR AREA 237m<sup>2</sup>

3 Bedrooms | 2 Bathrooms  
Built-in-Braai & Covered Patio  
Double Garage

This three bedroom and two bathroom unit is 237m<sup>2</sup>.

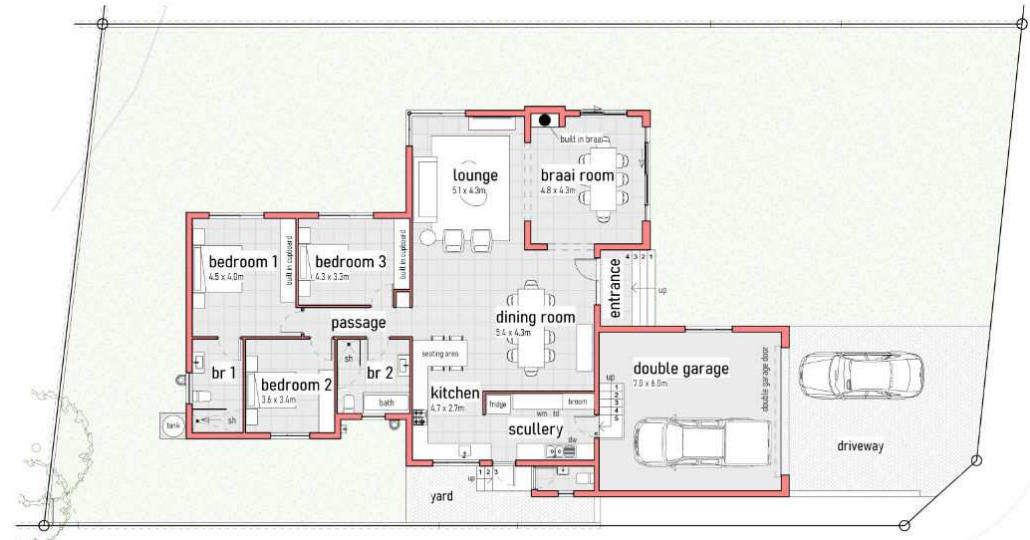
The double garage leads into a scullery. It has a modern kitchen and dining area, separate lounge and a covered patio that make up the living space. This leads into a passage to two bedrooms and a bathroom, and the main bedroom with an en-suite bathroom. There is an additional exterior restroom.

FROM R2 895 000

Including transfer cost



NORTH ELEVATION



FLOOR PLAN



PERSPECTIVE



3 D FLOOR PLAN

All images are impressions only and used for illustrations purposes and could vary from the finalized plans as some facilities are still being constructed/made. T&Cs APPLY



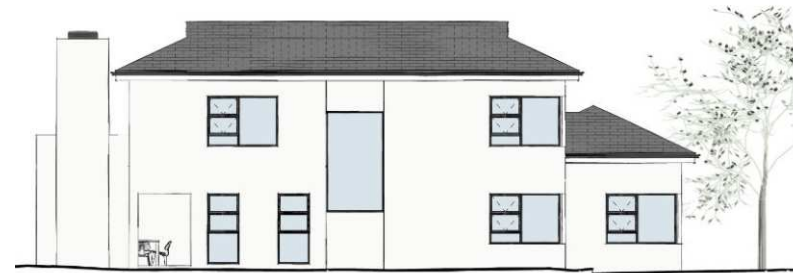
# TYPE B

TOTAL FLOOR AREA 287m<sup>2</sup>

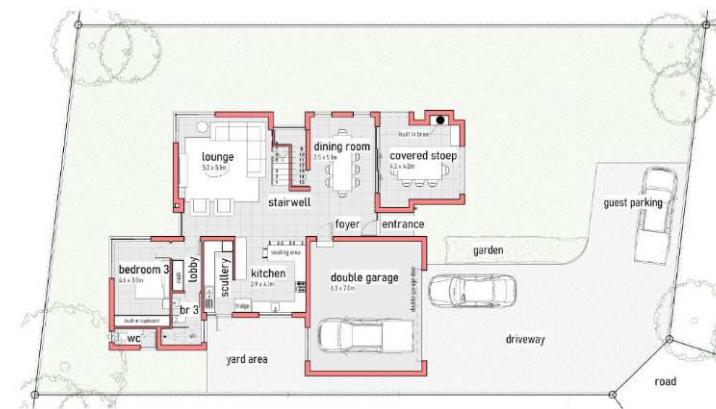
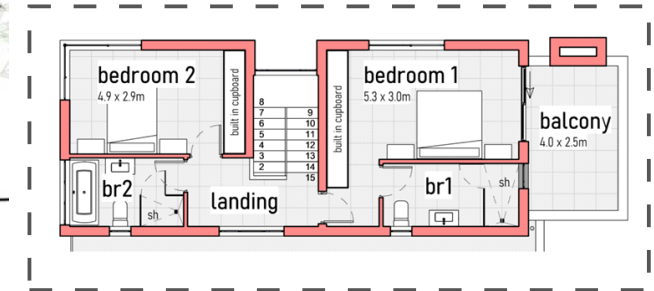
3 Bedrooms | 3 Bathrooms  
Built-in-Braai & Covered Patio  
Double Garage  
Balcony

A 287m<sup>2</sup> double story house with three bedrooms and three bathrooms.

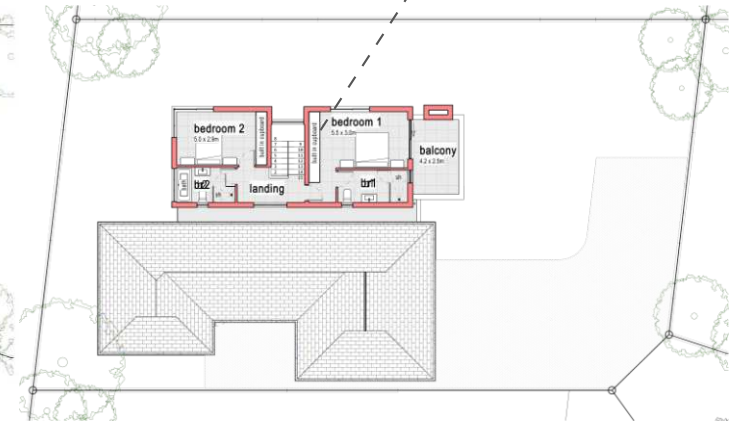
The double garage leads into a foyer. The ground floor has a modern kitchen, dining room, lounge area, covered patio, one bedroom and a bathroom. On the first floor are two bedrooms, one with a balcony, and each with an en-suite bathroom. There is an additional exterior restroom.



NORTH ELEVATION



GROUND FLOOR PLAN



FIRST FLOOR PLAN



PERSPECTIVE



3 D FLOOR PLAN - GROUND



3 D FLOOR PLAN - FIRST FLOOR

FROM R3 455 000

Including transfer cost

All images are impressions only and used for illustrations purposes and could vary from the finalized plans as some facilities are still being constructed/made. T&Cs APPLY



# TYPE C

TOTAL FLOOR AREA 202m<sup>2</sup>

3 Bedrooms | 2 Bathrooms  
Built-in-Braai & Covered Patio  
Double Garage

This three bedroom and two bathroom house is 202m<sup>2</sup>.

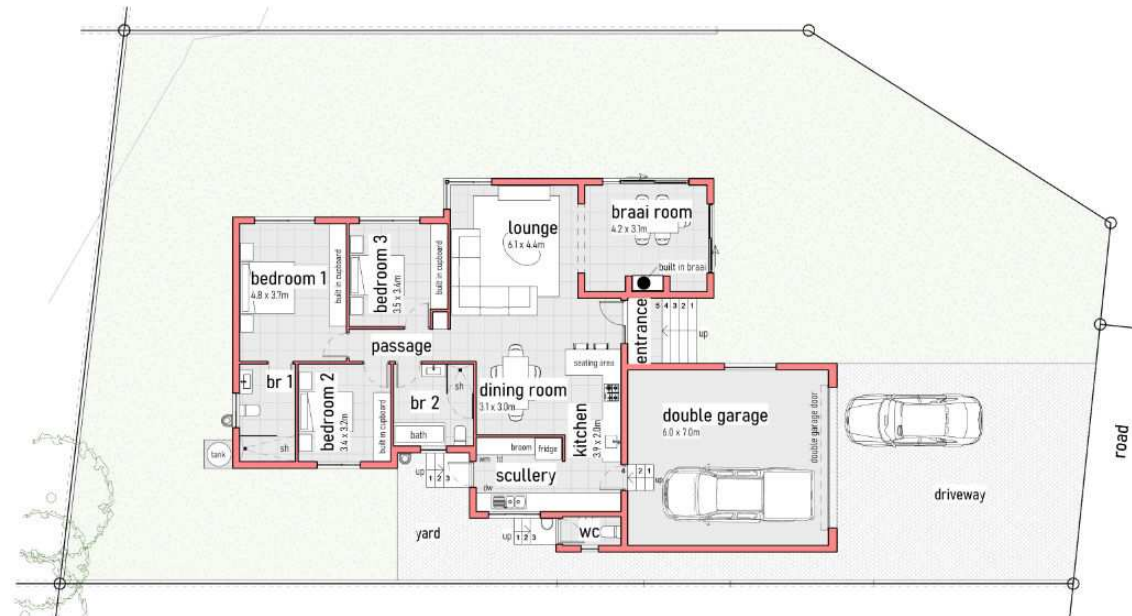
The double garage leads into a scullery. A modern kitchen, dining area, lounge and covered patio make up the living space. This leads into a passage to two bedrooms, a bathroom and the main bedroom with an en-suite bathroom. There is an additional exterior restroom.

FROM R2 550 000

Including transfer cost



NORTH ELEVATION



FLOOR PLAN



PERSPECTIVE



3 D FLOOR PLAN

All images are impressions only and used for illustrations purposes and could vary from the finalized plans as some facilities are still being constructed/made. T&Cs APPLY



# TYPE D

TOTAL FLOOR AREA 228m<sup>2</sup>

3 Bedrooms | 3 Bathrooms  
Built-in-Braai & Covered Patio  
Double Garage

This three bedroom and three bathroom house is 228m<sup>2</sup>.

This house has a bedroom and bathroom at the front. The double garage has a door leading into a foyer. A spacious lounge, dining room and covered patio make up the living area. The kitchen has a scullery. A passage leads to another bedroom, bathroom, and the main bedroom with an en-suite bathroom. There is an additional exterior restroom.

**FROM R2 855 000**

Including transfer cost



NORTH ELEVATION



FLOOR PLAN



PERSPECTIVE

All images are impressions only and used for illustrations purposes and could vary from the finalized plans as some facilities are still being constructed/made. T&Cs APPLY



# TYPE E

**TOTAL FLOOR AREA 239m<sup>2</sup>**

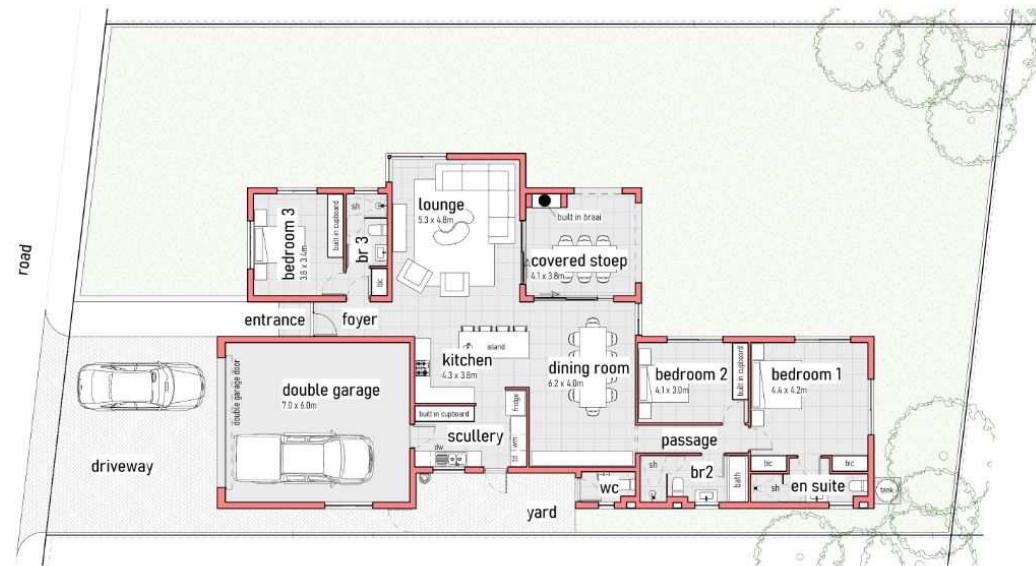
3 Bedrooms | 3 Bathrooms  
Built-in-Braai & Covered Patio  
Double Garage

This three bedroom and three bathroom house is 239m<sup>2</sup>.

This house has a bedroom and bathroom at the front. The double garage has a door leading into a scullery. A modern kitchen, spacious lounge, dining room and covered patio make up the living area. A passage leads to another bedroom, bathroom, and the main bedroom with an en-suite bathroom. There is an additional exterior restroom.

**FROM R2 950 000**

Including transfer cost



All images are impressions only and used for illustrations purposes and could vary from the finalized plans as some facilities are still being constructed/made. T&Cs APPLY



# TYPE F

**TOTAL FLOOR AREA 240m<sup>2</sup>**

3 Bedrooms | 3 Bathrooms

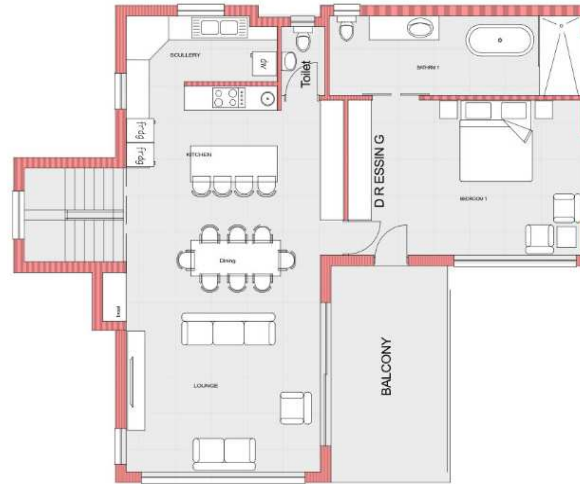
Built-in-Braai & Patio

Double Garage

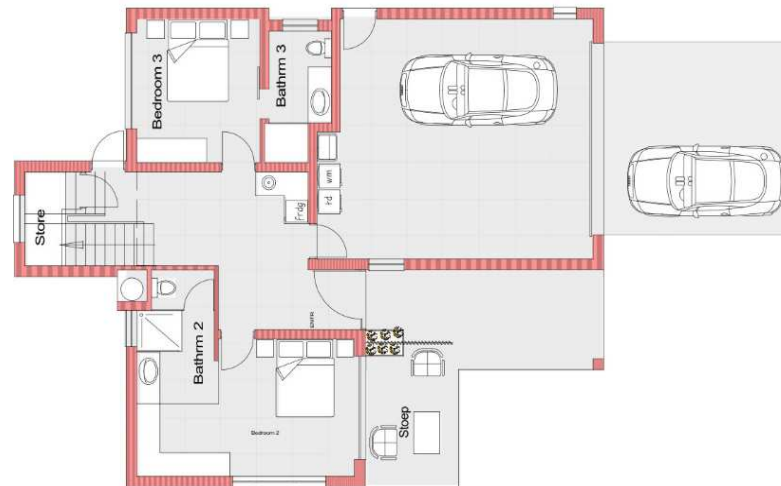
Balcony

This 240m<sup>2</sup> double story house has three bedrooms, three bathrooms and an additional guest restroom on the first floor.

The ground floor has two bedrooms, each with an en-suite bathroom, a patio and a door leading into a laundry area in the double garage. The first floor has a main bedroom with an en-suite bathroom, a guest restroom, scullery, kitchen, dining room, built-in-braai and a lounge area that leads to a balcony.



FIRST FLOOR PLAN



GROUND FLOOR PLAN

**FROM R2 985 000**

Including transfer cost

All images are impressions only and used for illustrations purposes and could vary from the finalized plans as some facilities are still being constructed/made. T&Cs APPLY



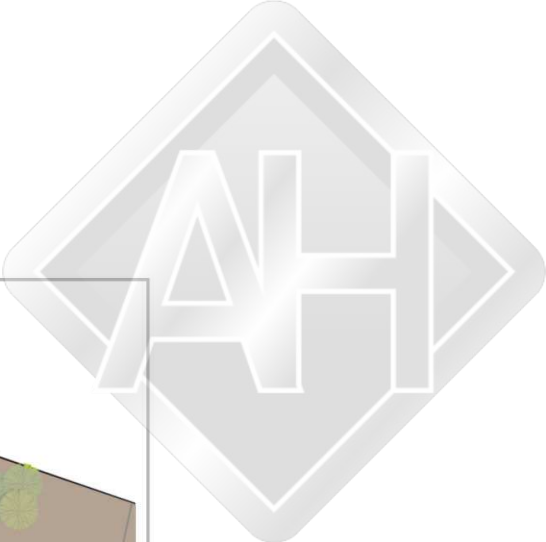
# PRICING

PLAN TYPE	SIZE	BED	BATH	BRAAI & COVERED PATIO	BALCONY	DB GARAGE	PRICE FROM*
A	237m <sup>2</sup>	3	2	YES	NO	YES	R2 895 000
B	287m <sup>2</sup>	3	3	YES	YES	YES	R3 455 000
C	202m <sup>2</sup>	3	2	YES	NO	YES	R2 550 000
D	228m <sup>2</sup>	3	3	YES	NO	YES	R2 855 000
E	239m <sup>2</sup>	3	3	YES	NO	YES	R2 950 000
F	240m <sup>2</sup>	3	3	YES	YES	YES	R2 985 000

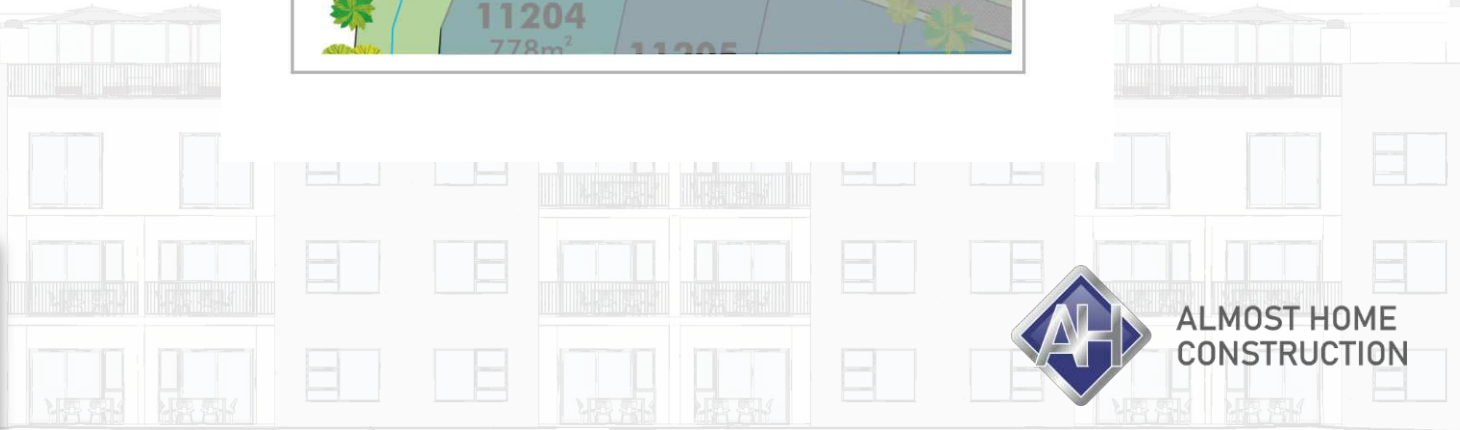
\*Please note that prices as listed may at any time be changed by the developer in its sole and absolute discretion.



Sectional Title  
Apartment Block  
COMING SOON...

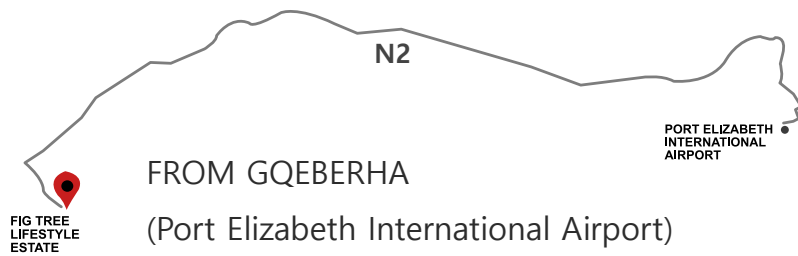


PHASE 2



All images are impressions only and used for illustrations purposes and could vary from the finalized plans as some facilities are still being constructed/made. T&Cs APPLY

# DIRECTIONS



1 hr 1 min (89.5 km)



## FIG TREE

Lifestyle Estate

+42 293 3333

2 St Francis Road, Jeffreys Bay

admin@figtreelifestyleestate.co.za

[CLICK HERE](#)

TO VISIT OUR WEBSITE

[www.figtreelifestyleestate.co.za](http://www.figtreelifestyleestate.co.za)

# Welcome to Your New Home

---

CONTACT ME TODAY



**CLICK HERE**  
TO VISIT OUR WEBSITE

[www.deucerealestate.com](http://www.deucerealestate.com)